

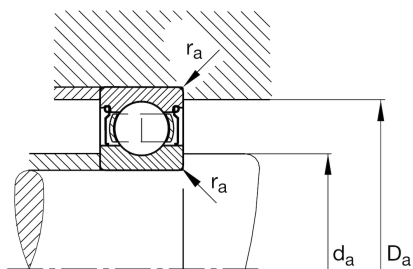
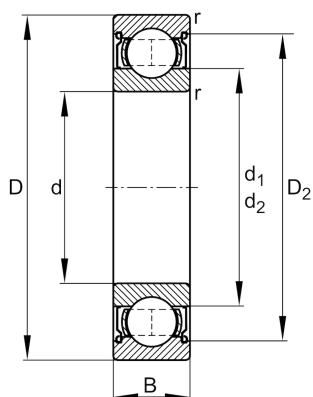
FAG

6307-2Z

Deep groove ball bearing

Schaeffler ID:
0167232600000Deep groove ball bearing 63...-2Z, single
row, shields, steel sheet metal cage

Technical information

**Dimensions**

r_{\min}	1.5 mm	Minimum chamfer dimension
D_2	67.6 mm	Caliber diameter outer ring
d_1	49.3 mm	Shoulder diameter inner ring
	0.465 kg	Weight

Main Dimensions & Performance Data

d	35 mm	Bore diameter
D	80 mm	Outside diameter
B	21 mm	Width
C_r	35,500 N	Basic dynamic load rating, radial
C_{0r}	19,100 N	Basic static load rating, radial
C_{ur}	1,290 N	Fatigue load limit, radial
n_G	10,500 1/min	Limiting speed
n_{gr}	9,900 1/min	Reference speed

Mounting dimensions

$d_{a\min}$	44 mm	Minimum diameter shaft shoulder
$D_{a\max}$	71 mm	Maximum diameter of housing shoulder
$r_{a\max}$	1.5 mm	Maximum fillet radius

Calculation factors

f_0	13.1	Calculation factor
-------	------	--------------------

Temperature range

T_{\min}	-20 °C	Operating temperature min.
T_{\max}	120 °C	Operating temperature max.